



ISM UNIVERSITY OF
MANAGEMENT AND ECONOMICS

One step ahead

ISM FACTSHEET 2021 - 2022



WHAT IS ISM UNIVERSITY OF MANAGEMENT AND ECONOMICS:

No. 1 in Lithuania in:

- Management
- Economics
- Business
- Finance



ISM University of Management and Economics is one of the top-ranked business universities in the Baltics, founded by BI Norwegian Business School. Our name has always been closely associated with quality, international experience, prestige, leadership and constant progress.

We are conveniently located in the heart of Vilnius, in a historic building of a former Basilian monastery. Our students say that this ambience inspires to learn and achieve more.

ABOUT US

- The highest ranked business school in Lithuania (4 Palmes, Eduniversal Business Schools Ranking)
- All levels of studies: bachelor's, master's, doctoral and executive education, short courses
- Over 100 exchange and Double degree partners in all continents of the world
- International students from over 30 different countries
- On a track to prestigious AACSB (Association to Advance Collegiate Schools of Business) accreditation
- Member of EFMD (European Foundation for Management Development), globally recognised accreditation body for business schools, business school programmes, and corporate universities
- 42 % international faculty

ABOUT OUR STUDENTS

- 98% graduates would recommend studies at ISM to friends or family
- 98% graduates are employed in their study field
- 1/3 of ISM graduates have their own business
- 60 % start working while they are studying

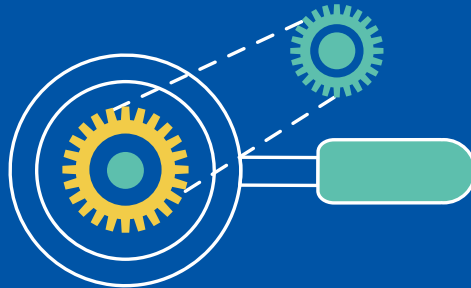


STUDENT NOMINATION

Students are nominated via email.

Once nominated to ISM, student will receive a link to ISM Online platform where he/ she will be required to fill in personal information as well as upload the following documents:

- Transcript of Records
- 1 photo
- Passport / ID card copy
- Insurance copy



NOMINATION DEADLINES

Spring
semester
**1
November**

Autumn
semester
**1
May**

ALL AFOREMENTIONED DOCUMENTS MUST BE UPLOADED AT THE SAME TIME

Having filled online application with aforementioned documents students need to choose courses and upload Learning Agreement to ISM online platform.

The final course list will be announced after the nomination period.

The deadline for submitting all documents and choosing courses is December 1 (for Spring semester) and June 1 (for Autumn semester).

EXCHANGE AT ISM: APPLICATION PROCESS



NOMINATED STUDENTS
RECEIVE AN
AUTOMATIC E-MAIL
WITH A LINK TO THE
ONLINE SYSTEM

AFTER NOVEMBER 1/ MAY 1



STUDENTS REGISTER
THEMSELVES TO THE ONLINE
SYSTEM AND UPLOAD THE
NECESSARY DOCUMENTS

UNTIL NOVEMBER 15/ MAY 15



STUDENTS CHOOSE
COURSES AND UPLOAD
LEARNING AGREEMENTS TO
THE ONLINE SYSTEM

UNTIL DECEMBER 1/ JUNE 1



STUDENTS RECEIVE
ADMISSION LETTERS

IN DECEMBER / JUNE



STUDENTS RECEIVE INFO
ABOUT EXCHANGE AT ISM
AND ORIENTATION WEEK

IN JANUARY/ JULY



STUDENTS PARTICIPATE
IN THE ORIENTATION WEEK
(MANDATORY)

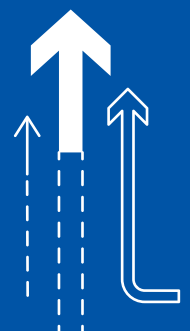
**BEGINNING OF FEBRUARY
THE END OF AUGUST**



STUDENTS CAN CHANGE
COURSES IN THEIR LEARNING
AGREEMENT*

**AUGUST 25 – SEPTEMBER 7
JANUARY 26- FEBRUARY 8**

*Courses can be changed only if there are overlaps or other important reasons



ACADEMIC INFORMATION

2021 - 2022

FALL SEMESTER 2021/2022	SPRING SEMESTER 2021/2022
Duration – 20 weeks Official dates September 1, 2021 – January 21, 2022	Duration – 20 weeks Official dates January 31, 2022 – June 17, 2022
Welcome week* August 30 – September 3, 2021	Welcome Week* January 31, 2022 – February 4, 2022
Lectures September 1 – December 12, 2021	Lectures January 31 – May 15, 2022
Examination* December 13 – December 23, 2021	Examination + retakes May 16 – June 17, 2022
Christmas holidays December 24 – January 02, 2022	Summer holidays June 18 – August 31, 2022
Examination + retakes January 03 – January 21, 2022	

* The study mode as well as the organization of exam sessions for 2021/2022 academic year is yet to be confirmed and will depend on the epidemiological situation in Lithuania

* The Welcome Week dates are subject to change



REGISTRATION TO COURSES

Students register to the courses themselves on MY.ISM online system. All courses have quotas for international students; therefore the seats in each course are allocated on the first come first serve basis. The quicker students fill in online application form and choose courses the better are the chances to get the seat in the preferred course.

STUDY LANGUAGE - English

IMPORTANT INFORMATION

**Course list
for 2021 Fall**



- COURSE LOAD - 6 ECTS per course
- 30 ECTS - maximum course load per semester
- GRADING - 10- point scale, cumulative grading
- Course lists for the next semester are published in April/ October
- Transcript of records (digital) are issued on MY.ISM platform, where students can download it personally
- Exchange students are entitled to the retake exams, held at the end of the semester
- Master students take 1 course at a time - 3 weeks of classes are followed by 1 week of exams preparation and exam taking
- Master students have classes in the evenings (start from 18:00) and/or on Saturdays
- Master students can also choose undergraduate level courses
- Timetables are announced 2 weeks before the beginning of the semester

EXAMINATION PERIOD

During on-campus or blended study mode, the exam session for Bachelor exchange students is arranged in mid-December, so the exchange semester is finished before Christmas Holidays. If the exam session is organized online, it will only be held during the examination period in January.

In case of failed exams, students must be present in January as well, since exam retakes are organized in the second half of the month.

For spring semester there is no earlier exam session, exchange students take their exams along with regular students. Retake exams are organized in the second half of June. Exam session schedules are announced a month before the start of the exam session. Timetables are announced 2 weeks before the beginning of the semester.

All Master of Science studies are organized on module basis where the exams are held right after each course. Therefore, there is no regular exam session for Master of Science students.

ISM STUDY PROGRAMMES

UNDERGRADUATE STUDIES

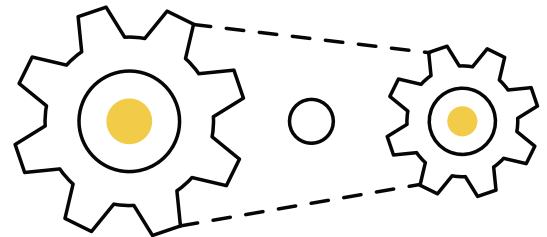


- **INTERNATIONAL BUSINESS AND COMMUNICATION**
(3.5 - year programme, fully taught in English)
- **FINANCE**
(3.5 -year programme, fully taught in English)
- **ECONOMICS AND POLITICS**
(3.5 - year programme, fully taught in English)
- **INDUSTRIAL TECHNOLOGY MANAGEMENT**
(3.5 - year programme, fully taught in English)
- **BUSINESS MANAGEMENT AND MARKETING**
(3.5 -year programme, fully taught in English)
- **ECONOMICS AND DATA ANALYTICS**
(3.5 -year programme, fully taught in English)

GRADUATE STUDIES



- **INTERNATIONAL MARKETING AND MANAGEMENT**
(2 - year programme, fully taught in English)
- **FINANCIAL ECONOMICS**
(2- year programme, fully taught in English)
- **INNOVATION AND TECHNOLOGY MANAGEMENT**
(1.5-year programme, fully taught in English)



BALTIC DOCTORAL PROGRAMME IN MANAGEMENT AND ADMINISTRATION

PhD Degree, 4-6 years. Partners: BI Norwegian Business School (Norway), Aarhus University (Denmark), Tartu University (Estonia).

Research areas: governance and leadership, human resource management, strategy and marketing, consumer behaviour, finance and risk management, change management and organizational development, business process management.



ISM SUMMER UNIVERSITY IN BALTICS

3-week long course held in July, with more than 100 students from all over the world enables undergraduate students to study during the best time of the year in one of the fastest changing regions of Europe.

- Each subject in the curriculum has a strong European focus.
- ECTS transferrable credits from the top ranked university in the Baltics.
- Courses: International Project Management, International Business; Economics, International Marketing.

BEFORE YOU ARRIVE



HEALTH INSURANCE

Insurance must guarantee the coverage of costs and expenses of the emergency medical aid, which may occur due to the foreigner's return to the foreign state due to health issues (transportation, including the escort of a personal health care expert (experts), as defined in the Law on Health System of the Republic of Lithuania.

The insurance amount must be at least 30 000 Euros. The health insurance should be valid in Lithuania and in all Schengen area. For EU citizens the European Health Card is also valid.

MIGRATION

For EU citizens

Students have to register their residence if they come to live in the Republic of Lithuania for more than 3 months in a 6 - month period, and obtain a certificate signifying the right to temporarily reside in Lithuania. Students have to do so within 3 months of arrival in Lithuania.

For non EU / EEA citizens

Students shall apply for a national visa D prior to their arrival to the Republic of Lithuania if visa free regime does not apply. Those students, who can enter the country without visa and stay here for three months, shall apply for national visa D within these three months in the Migration Department of the Republic of Lithuania. The decision on the issue of visa D shall be made within 15 days after the receipt of application.

More information: migration@ism.lt

INFORMATION ON COVID -19

Quarantine arrangements and relevant information about coronavirus (COVID-19) are constantly being updated by the government, you are advised to check [this](#) government website for the latest details.

General information on prevention measures at the University can be found [here](#).

VILNIUS – A GREAT PLACE TO LIVE, STUDY AND WORK!

#1 city offering the fastest public Wi-Fi in the world

#1 city in the world for attracting Tech Startups, according to Tech Start-up FDI Attraction Index 2019

- One of the capital cities in Europe breathing the cleanest air, according to European Green City Index
- One of the greenest cities in Europe - 46% is dedicated to green space
- Walkalbe - getting to most places in Vilnius is just a matter of walking for a few minutes

PRICE LEVELS:

- Monthly high speed internet cost 9,6 euros
- Typical business lunch price 7 euros
- Rent for and average one-room flat in the city centre 506 euros
- Monthly public transport ticket 29 euros



STUDENT LIFE AT ISM

CREATIVE SHOCK

Creative Shock is an annual business case competition for students from all around the world. Participants every year are gathered to solve business, marketing and PR problems for social enterprises and organizations.

In 2018 the competition was attended by 1741 participants from 227 universities and 101 countries.

ERASMUS STUDENT NETWORK

ESN ISM is a part of Erasmus Student Network, which is the biggest student organization in Europe. ESN ISM helps exchange students to integrate in Lithuania, introduces them to the culture and history, and organizes various events and trips.



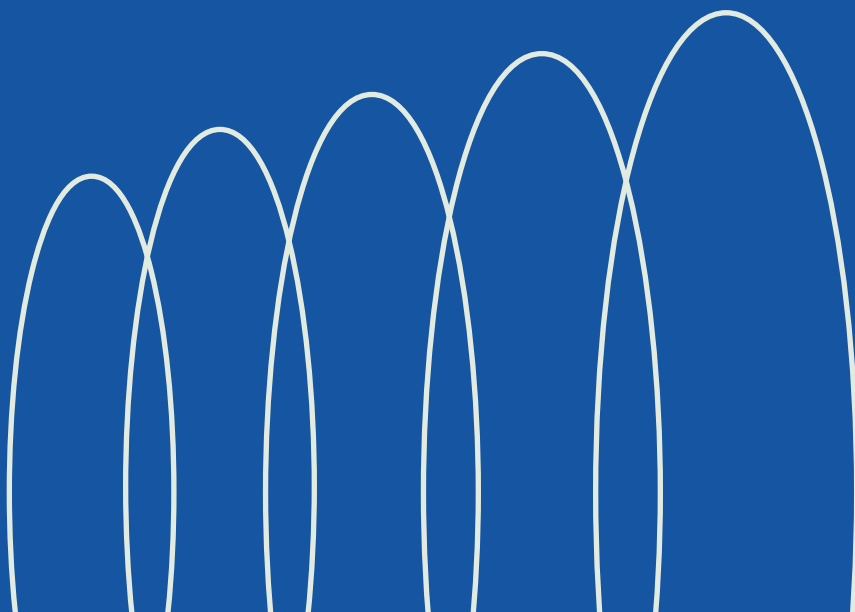
www.esnlithuania.org

BUDDY PROGRAMME

All exchange students are offered buddies - local students who help to facilitate and integrate international students into ISM community and local life.

STUDENT CLUBS AT ISM

Various students clubs are operating at ISM - from ISM Vocal ensemble to the ISM politics club and they are looking forward for international students to join their teams. You can find more information [here](#).



INTERNATIONAL STUDIES OFFICE TEAM

Monika Kondratavičiūtė

Team Leader for International Studies

monika.kondrataviciute@ism.lt

Simona Puidokienė

International Studies Coordinator (Outgoing)

simona.puidokiene@ism.lt

Greta Tarnauskaitė

International Studies Coordinator (Incoming)

greta.tarnauskaite@ism.lt

You may address all your inquiries directly to international@ism.lt

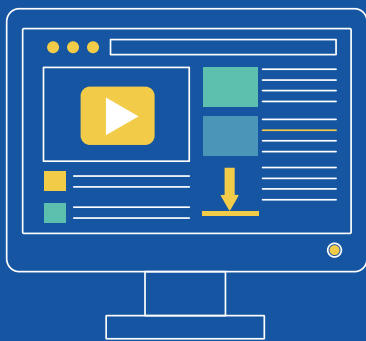
HOUSING INQUIRIES:

accommodation@ism.lt

MIGRATION:

migration@ism.lt

ERASMUS code: LT VILNIUS 25



SOCIAL MEDIA



Supported by:



Erasmus+